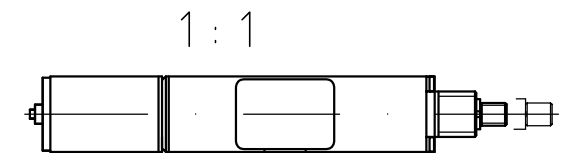
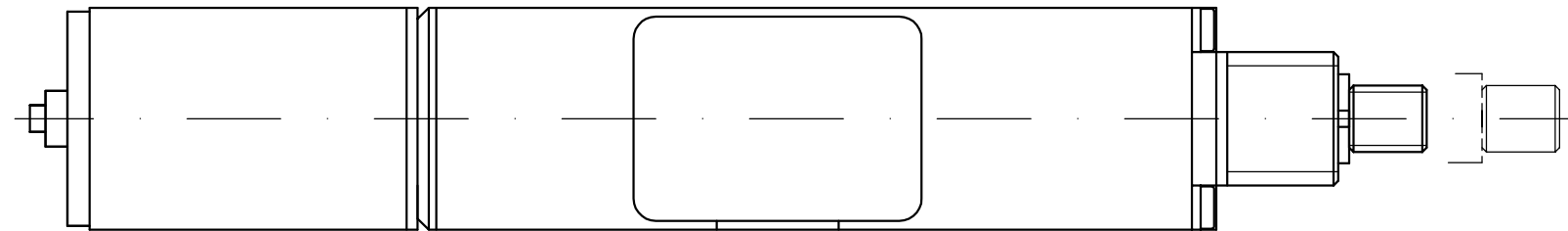
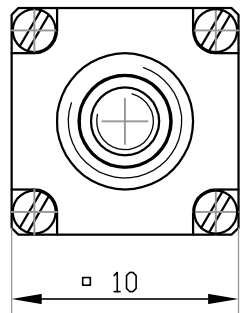
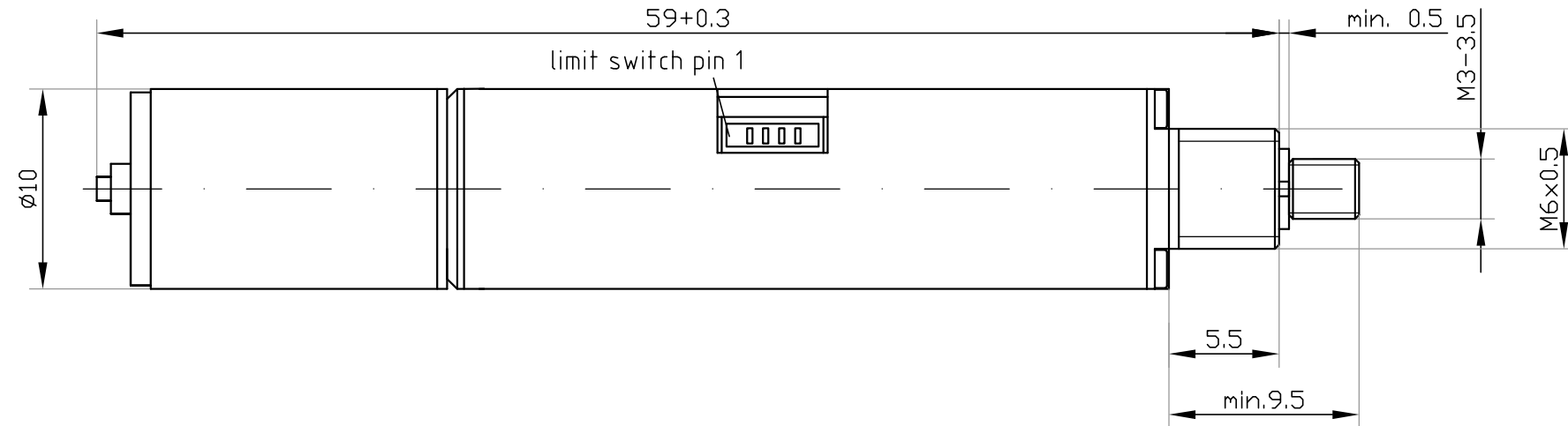


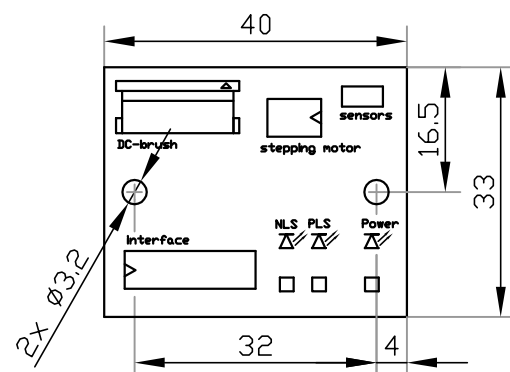
limit switch connector:
JST SM04B-SURS-TF(LF)

cable:
JST 04SUR-04SUR-32W150
AWG32, 4-poles, 150mm, pitch 0.8mm

Pin assignment:
1 neg. limit switch
2 GND
3 pos. limit switch
4 Vcc (+5V...12V)



connector pcb: (1:1)



Technical data: (preliminary)
Motor: Stepper $\phi 10\text{mm}$ / 0.25A / 20Steps/Rev.
Theoretical resolution: $0.04\mu\text{m}$ @ Fullstep
Uni-directional repeatability: $\pm 1\mu\text{m}$
Gearbox: MHD-10-500
Gear ratio: 500:1
Pitch: 0.4mm
max. speed: 0.2 mm/sec
Travel range: 6mm
max. Load: 12N
2 Limit switches
Ambient Temp.: $-20\text{...}+65^\circ\text{C}$

Subject to change without notice
Dimensions in mm

Micromotion PROPERTY		Allgemeintoleranzen / General Tolerances: ISO 2768-f		micromotion®		Micromotion GmbH						
Diese Zeichnung ist unser geistiges Eigentum und darf ohne unsere Einwilligung weder kopiert, vervielfältigt noch an dritte weitergegeben werden.		This drawing and information herein is our property and is to be used in strict confidence. It shall not be copied or given to any third party without our written permission.		0.5 -3	3 -6	6 -30	30 -120	120 -400	400 -1000	1000 -2000	2000 -4000	An der Fahrt 13 Tel.: +49 (0)6131 66927-0 55124 Mainz Fax: +49 (0)6131 66927-20 Germany
		Ersatz für / Replacement for:		Maßstab / Scale		(Gewicht / Weight)						
		Ersetzt durch / Replaced by:		3 : 1								
		Datum / Date		Name		(Benennung / Title)						
		08.05.09		Deumlich		MLP-10-500-6-ST-SPM0024						
		Gepr. / Checked		Name		(Zeichnungsnummer / drawing number)						
		08.05.09		Degen		C-12024.2.0A-100-011						
		Norm / Standard				Blatt / Sheet						
		Status				1						
Zus/Rev	Änderung / Modification	Datum / Date	Name			1 BL/SH						